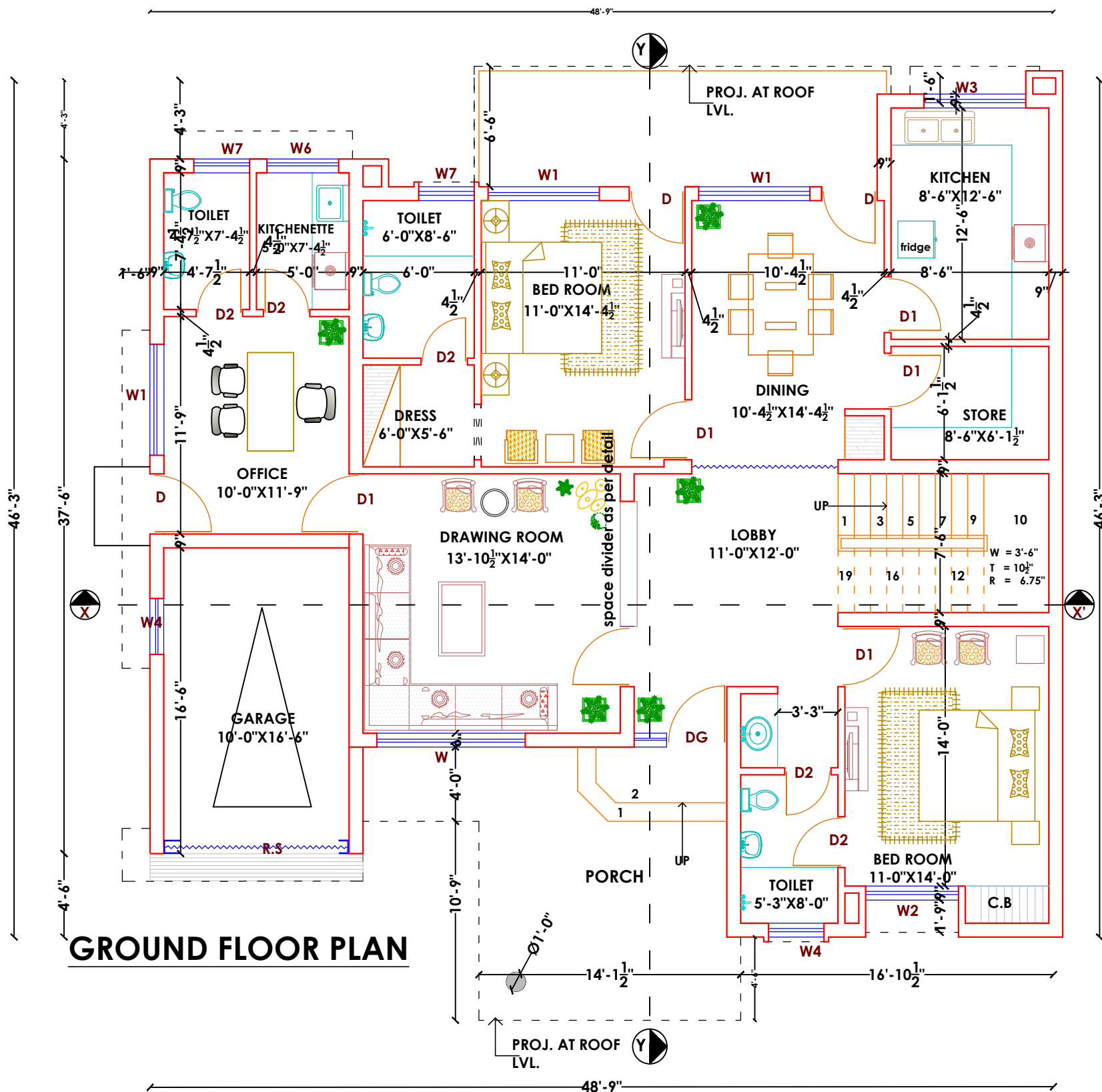


**TYPE- V FOR  
DSP RESIDENCES ,  
HARYANA POLICE  
HOUSING  
CORPORATION,  
PANCHKULA**

UNIT AREA-G.F	1390	SQ.FT
F.F	883	SQ.FT
<b>TOTAL</b>	<b>2273</b>	<b>SQ.FT</b>
OFFICE	217	SQ.FT
GARRAGE	185	SQ.FT
PORCH	225	SQ.FT

**TOTAL AREA 2900 SQ.FT**



**GROUND FLOOR PLAN**

JOINERY SCHEDULE				
Sr.No	NAME	SIZE	CILL	LINTEL
1	D	3'-3"X8'-6"	-	8'-6"
2	D1	3'-3"X7'-0"	-	7'-0"
3	D2	2'-6"X7'-0"	-	7'-0"
4	DG	5'-0"X7'-0"	1'-6"	8'-6"
5	W	8'-0"X6'-0"	2'-6"	8'-6"
6	W1	6'-0"X6'-0"	2'-6"	8'-6"
7	W2	5'-0"X6'-0"	2'-6"	8'-6"
8	W3	5'-0"X5'-0"	3'-6"	8'-6"
9	W4	5'-0"X3'-6"	5'-0"	8'-6"
10	W5	3'-6"X8'-6"	5'-7 1/2"	14'-1 1/2"
11	W6	3'-10 1/2"X5'-0"	3'-6"	8'-6"
12	W7	3'-0"X3'-6"	5'-0"	8'-6"

**NOTES:**

any doubt and discrepancy to be discussed with concerned architect before execution of work.

**REVISION:**

THE UNIT AREA HAS BEEN INCREASED BY 23SFT. SINCE THE WIDTH OF THR FRONT BED ROOM HAS BEEN INCREASED FROM 10'-6" TO 11'-0" AFTER GETTING APPROVED FROM **CMD** ON DATED **11.07.2019**  
2.) REVISION DATED 04/10/2019 RISER HAS BEEN PROVIDED 6.75" INSEAD OF 7 1/2" IN THE STAIR CASE

**TITLE:**

**GROUND FLOOR PLAN**

**CLIENT:**

**SCALE:**

N.T.S

**DATE:**

11/ 05/ 2016

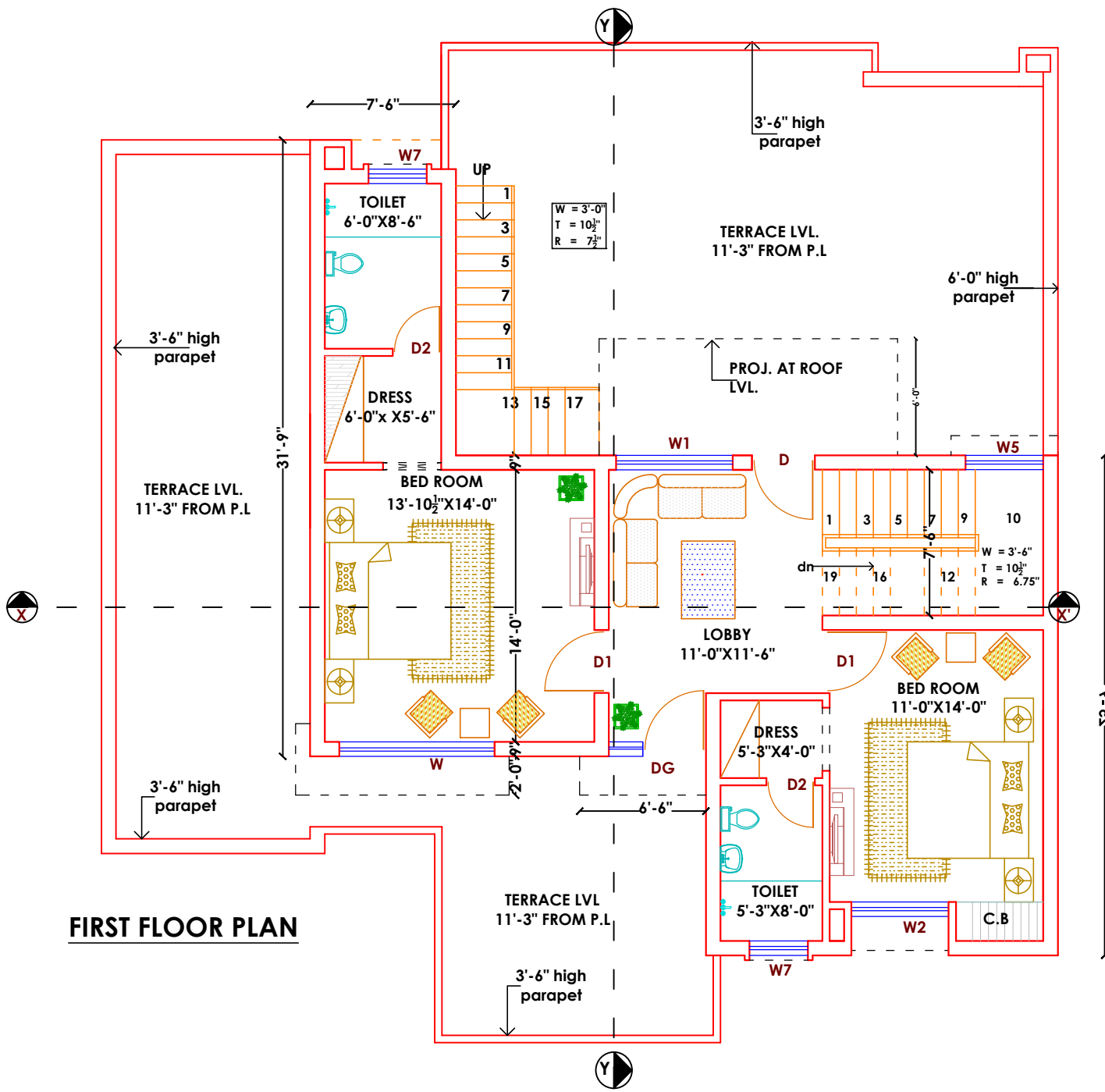
**SHEET NO:**

1-1

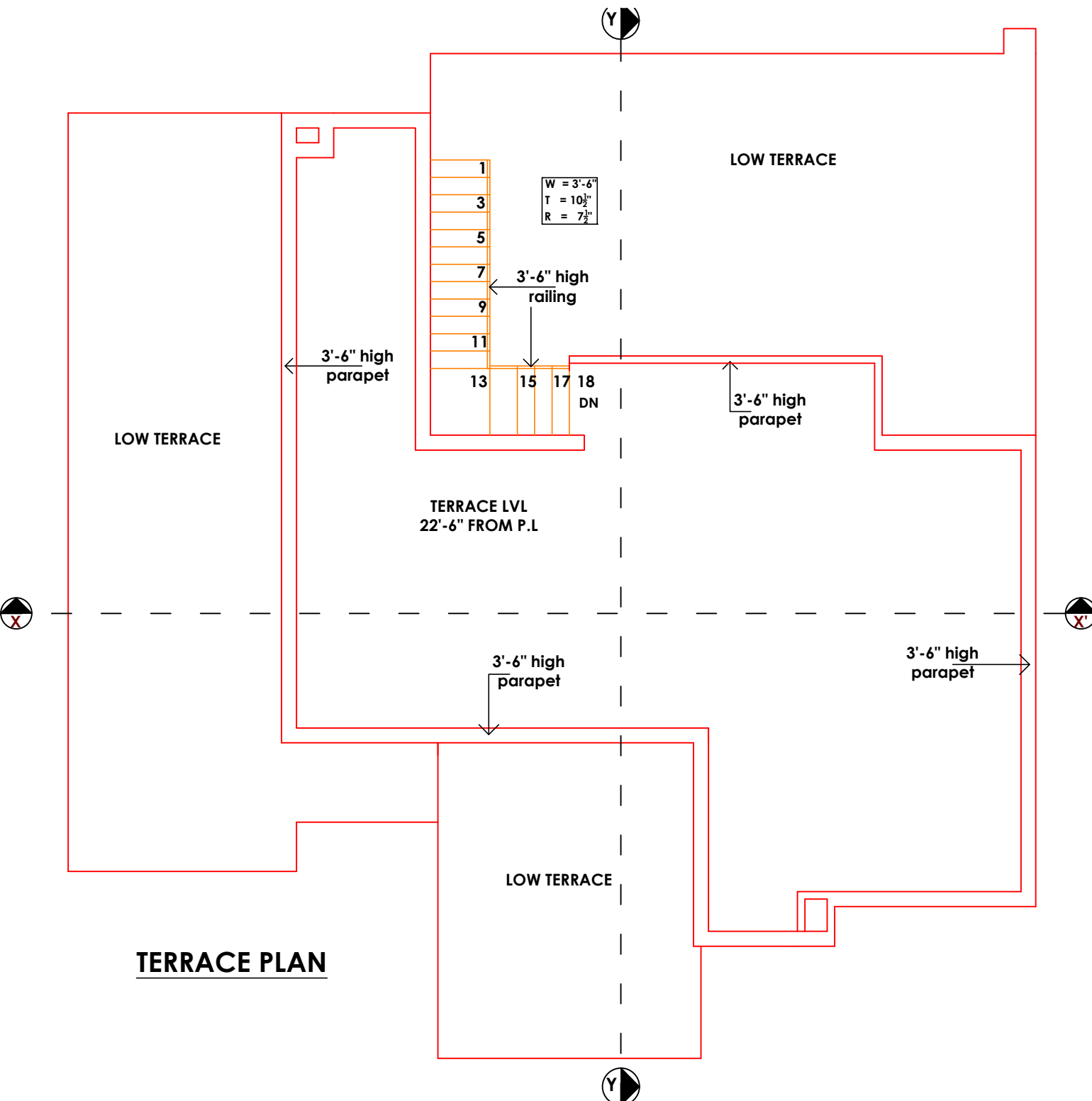
**JOB NO.**

1094

**TYPE-V FOR  
DSP RESIDENCES ,  
HARYANA POLICE  
HOUSING  
CORPORATION,  
PANCHKULA**



**FIRST FLOOR PLAN**



**TERRACE PLAN**

**TITLE:**

**FIRST FLOOR &  
TERRACE PLAN**

**CLIENT:**

**SCALE:**

N.T.S

**DATE:**

11/ 05/ 2016

**SHEET NO:**

1-2

**JOB NO.**

1094

**CONSULTANTS / ARCHITECTS :**