

HARYANA POLICE HOUSING CORPORATION, PANCHKULA

PROJECT :
STANDARD DESIGN FOR TYPE-I (STILT+6) CLUSTER TYPE HOUSES

JOINERY SCHEDULE

Sr. No	NAME	SIZE	CILL	LINTEL
1.	D	3'-6"X8'-6"	0'-0"	8'-9"
2.	D1	3'-3"X7'-0"	0'-0"	7'-0"
3.	D2	3'-0"X8'-6"	0'-0"	8'-9"
4.	D3	3'-0"X7'-0"	0'-0"	7'-0"
5.	D4	2'-6"X7'-0"	0'-0"	7'-0"
6.	W	3'-10 1/2"X6'-0"	2'-6"	8'-9"
7.	W1	6'-0"X6'-3"	2'-6"	8'-9"
8.	W2	5'-6"X6'-3"	2'-6"	8'-9"
9.	W3/EX	4'-0"X5'-3"	3'-6"	8'-9"
10.	W4/PV	2'-3"X3'-9"	5'-0"	8'-9"

ACTUAL COVERED AREA
 AREA OF ONE UNIT:- = 550 SQ.FT.
 AREA OF BALCONY :- = 63 SQ.FT.
 AREA OF CIRCULATION = 185 SQ.FT.
TOTAL AREA OF ONE UNIT = 798 SQ.FT.

GENERAL NOTES:

- THESE DRGS. ARE THE PROPERTY OF HPHC AND MUST NOT BE ALTERED COPIED OR USED IN WHOLE OR IN PART THEREOF WITHOUT THE PERMISSION OF THE AUTHORITY IN WRITING.
- ENGINEER AND CONTRACTOR MUST VERIFY ALL DIMENSIONS BEFORE EXECUTION OF WORK.
- PUBLIC HEALTH AND ELECTRICAL WORK SHOULD BE DONE PRIOR TO START OF WORK.
- SPECIFICATIONS TO BE FOLLOWED AS APPROVED BY THE COMPETENT AUTHORITY.
- PROVISION OF FIRE FIGHTING SHALL BE AS PER NBC AND SATISFACTION OF LOCAL FIRE AUTHORITIES.
- SOLAR WATER HEATING SYSTEM AS PER HARYANA GOVT. NOTIFICATION.
- RAIN WATER HARVESTING SYSTEM AS PER HARYANA GOVT. NOTIFICATION.
- WRITTEN DIMENSIONS ARE TO BE FOLLOWED ONLY.
- IN CASE OF ANY DOUBT PLEASE, REFER TO ARCHITECTURE BRANCH FOR CLARIFICATION.

NOTES:

THIS DRAWING HAS BEEN APPROVED BY CMD ON 11.07.219

C.M.D.:

CHIEF ENGINEER: CHIEF ARCHITECT:

ARCHITECT ASSTT: ARCHITECT:

SCALE: DATE:

N.T.S JULY,2019

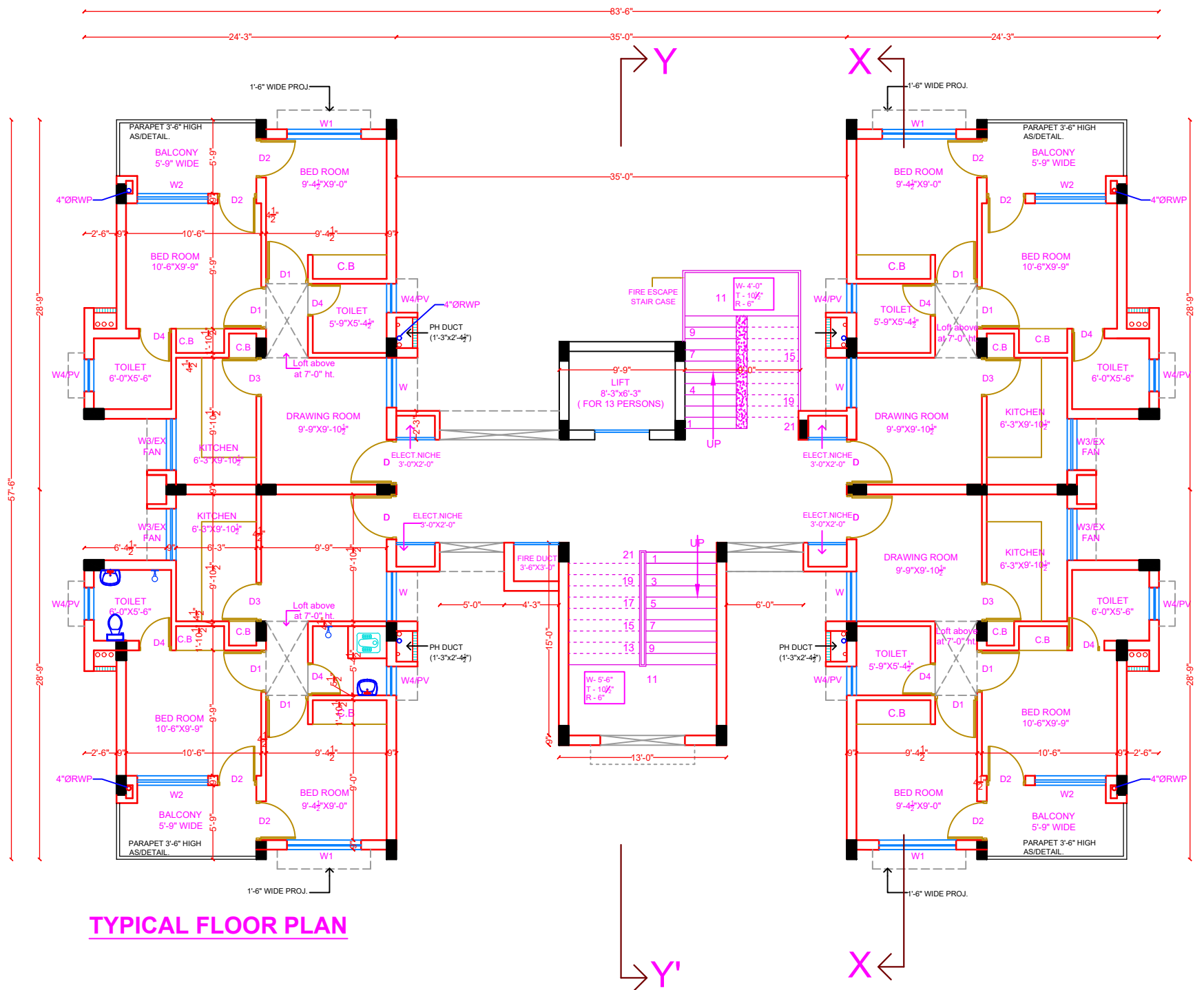
DEALT BY: CHECKED BY:

DWG NO.: JOB NO.:

2

TITLE:

GROUND FLOOR PLAN



TYPICAL FLOOR PLAN