

HARYANA POLICE HOUSING CORPORATION PANCHKULA

SECONDARY SCHOOL AT BHIWANI, KURUKSHETRA, KAITHAL, KARNAL, JIND, FARIDABAD NARNAUL AND NUH

NOTE :-

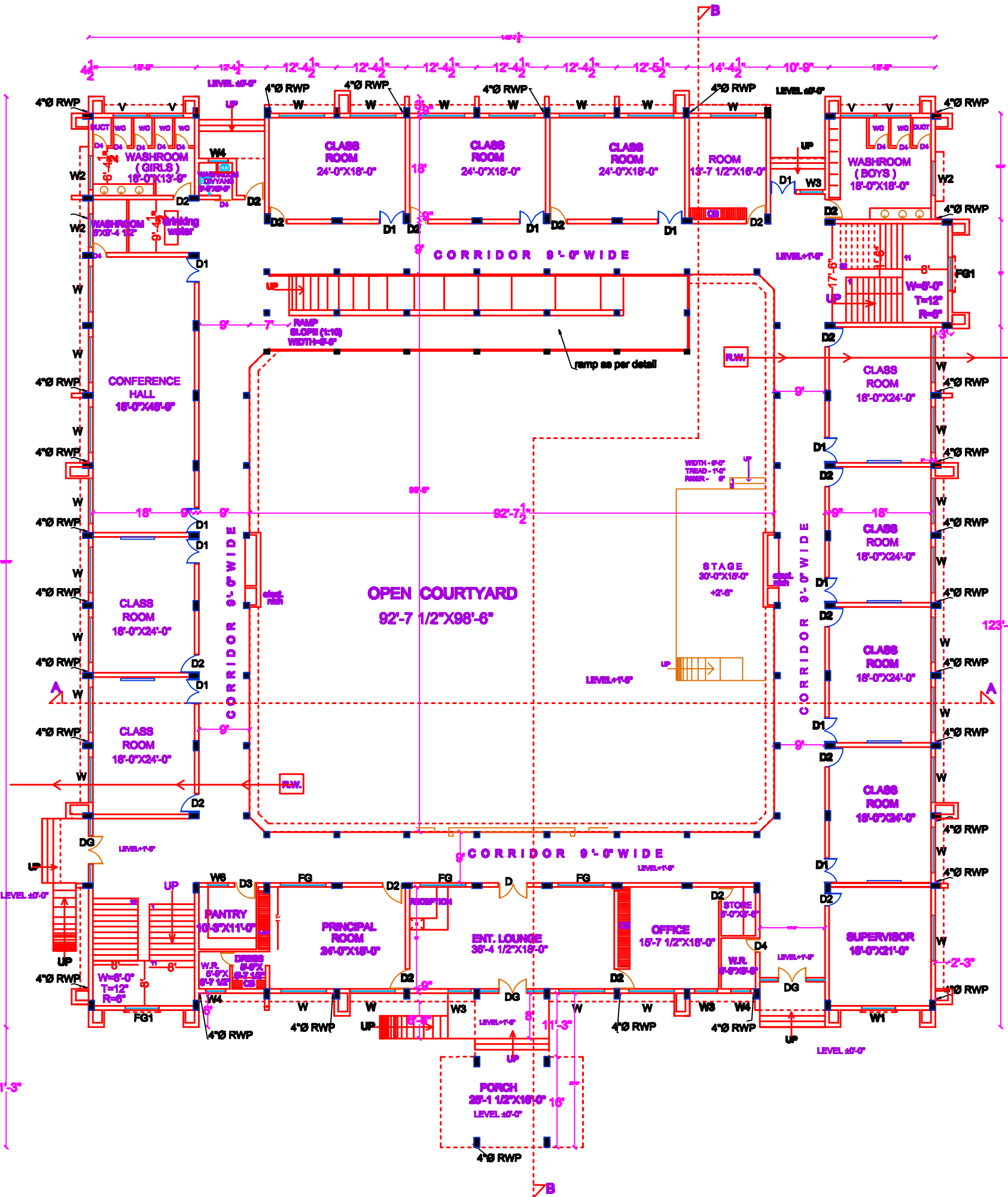
THIS DRAWING HAS BEEN APPROVED BY WMD ON 24-5-2017

SCHEDULE OF JOINERY

TYPE	SIZE	CILL	TOP
DG	11'-6" X 8'-6"	--	8'-6"
D	6'-0" X 8'-6"	--	8'-6"
D1	4'-6" X 8'-6"	--	8'-6"
D2	3'-6" X 8'-6"	--	8'-6"
D3	3'-0" X 7'-0"	--	7'-0"
D4	2'-6" X 7'-0"	--	7'-0"
W	8'-0" X 4'-6"	2'-6"	7'-0"
W1	6'-0" X 4'-6"	2'-6"	7'-0"
W2	6'-0" X 2'-0"	5'-0"	7'-0"
W3	4'-0" X 4'-6"	2'-6"	7'-0"
W4	3'-6" X 2'-0"	5'-0"	7'-0"
W5	8'-0" X 3'-6"	3'-6"	7'-0"
W6	3'-6" X 3'-6"	3'-6"	7'-0"
V	6'-0" X 2'-6"	7'-6"	10'-3"
FG	8'-0" X 6'-8"	3'-6"	10'-3"
FG1	6'-0" X 3'-6"	3'-6"	7'-0"

GENERAL NOTES

- ENGINEER & CONTRACTOR MUST VERIFY ALL DIMENSIONS BEFORE COMMENCING WORK AT SITE.
- STRUCTURAL DESIGN, PUBLIC HEALTH, ELECT. AND FIRE SAFETY SHOULD BE DONE PRIOR TO START OF WORK.
- PROVISION OF FIRE FIGHTING SHALL BE AS PER NBC AND SATISFACTION OF LOCAL FIRE AUTHORITIES.
- SPECIFICATIONS TO BE FOLLOWED SHOULD BE AS APPROVED BY HPWC.
- WORKING DIMENSIONS ARE NOT TO BE MEASURED ONLY WRITTEN DIMENSIONS ARE TO BE FOLLOWED.
- IN CASE OF DOUBT OR DISCREPANCY PLEASE REFER TO CHIEF ARCHITECT, HPWC FOR CLARIFICATION.
- SOLAR WATER HEATING SYSTEM AS PER HARYANA GOVT. GUIDELINES TIME TO TIME.
- RAIN WATER HARVESTING SYSTEM AS PER HARYANA GOVT. NOTIFICATION.



GROUND FLOOR PLAN
COVD AREA = 15762 SFT.
TOTAL COVD AREA = (15762 + 18213 + 18213 + 877) = 46765 SFT.

REVISION :- 14/11/2017
 STAIRCASE WINDOW AND 9" BRICK WALL WITH COLUMN HAVE BEEN CHANGED

REVISION :- 11/05/2018
 HEIGHT OF SCHOOL HAS BEEN INCREASED FROM 10'-6" TO 11'-3"

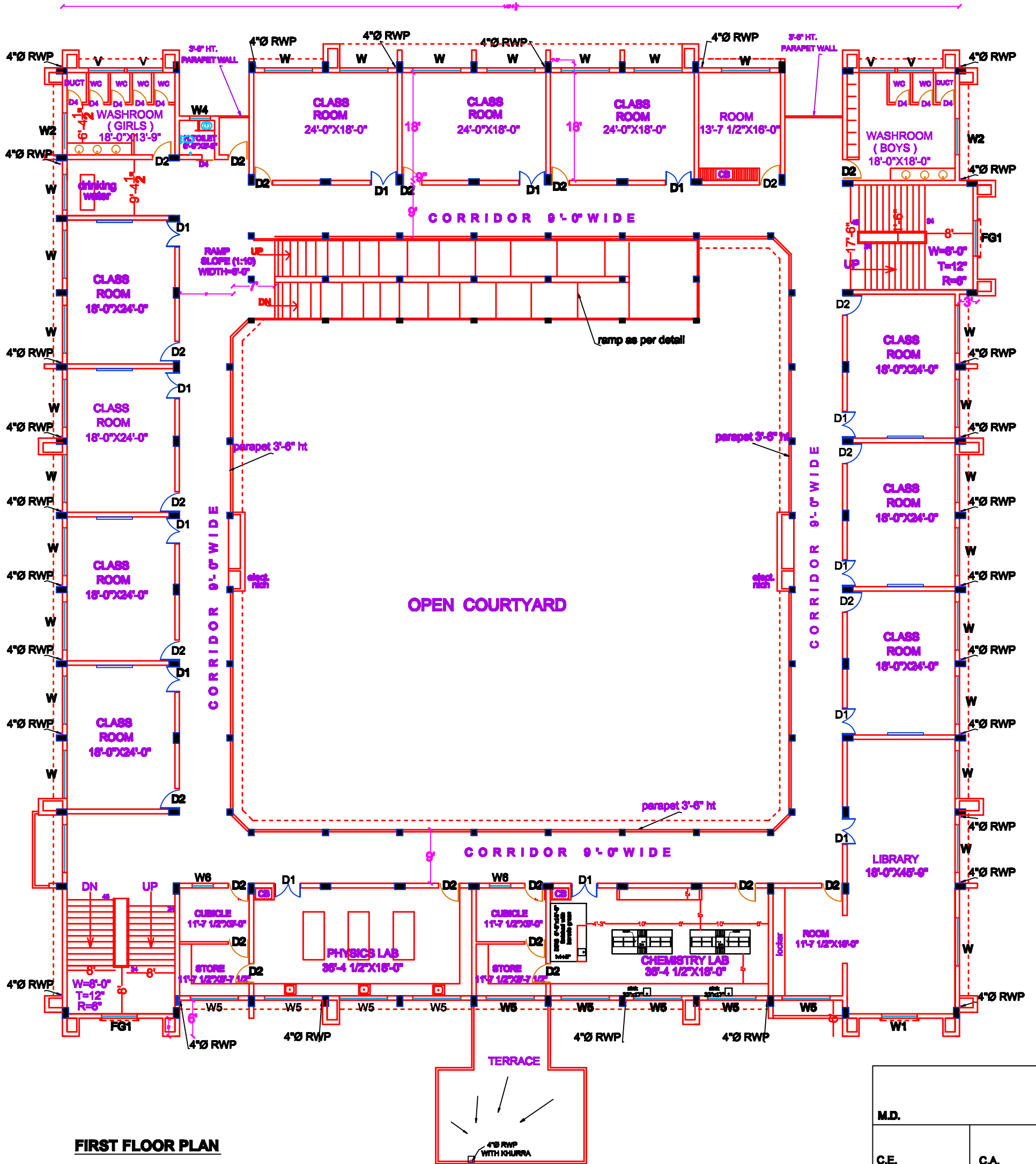
M.D.	
C.E.	C.A.
S. A.	ARCHITECT
JOB NO. 1101	SCALE
DRG. NO. 1	DATE 30-5-2017
TITLE: GROUND FLOOR PLAN	

PRODUCED BY AN AUTODESK EDUCATIONAL PRODUCT

PRODUCED BY AN AUTODESK EDUCATIONAL PRODUCT

HARYANA POLICE
HOUSING CORPORATION
PANCHKULA

SECONDARY SCHOOL AT
BHIWANI , KURUKSHETRA ,
KAITHAL , KARNAL , JIND
FARIDABAD NARNAUL AND NUH



FIRST FLOOR PLAN
COVD AREA =15213 SFT.

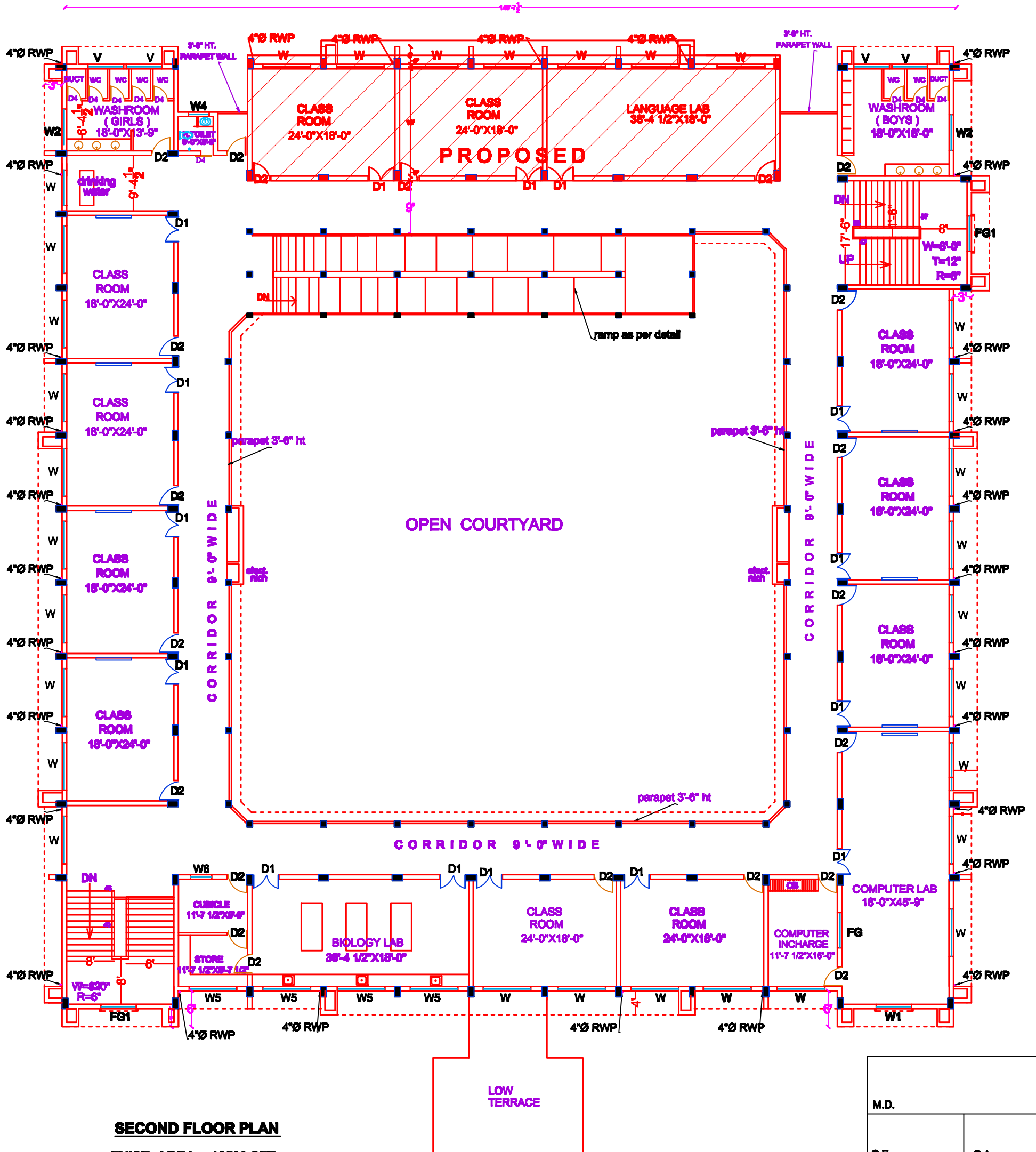
M.D.	
C.E.	C.A.
S. A.	
ARCHITECT	
JOB NO.	SCALE
1101	
DRG. NO.	DATE
2	30-5-2017
TITLE: FIRST FLOOR PLAN	

PRODUCED BY AN AUTODESK EDUCATIONAL PRODUCT

PRODUCED BY AN AUTODESK EDUCATIONAL PRODUCT

HARYANA POLICE
HOUSING CORPORATION
PANCHKULA

SECONDARY SCHOOL AT
BHIWANI , KURUKSHETRA ,
KAITHAL , KARNAL , JIND
FARIDABAD NARNAUL AND NUH



SECOND FLOOR PLAN

EXIST. AREA = 13500 SFT.

PROP. AREA = 1713 SFT.

COVD AREA = 15213 SFT.

M.D.			
C.E.		C.A.	
S. A.		ARCHITECT	
JOB NO.		SCALE	
1101			
DRG. NO.		DATE	
3		30-5-2017	
TITLE: SECOND FLOOR PLAN			