

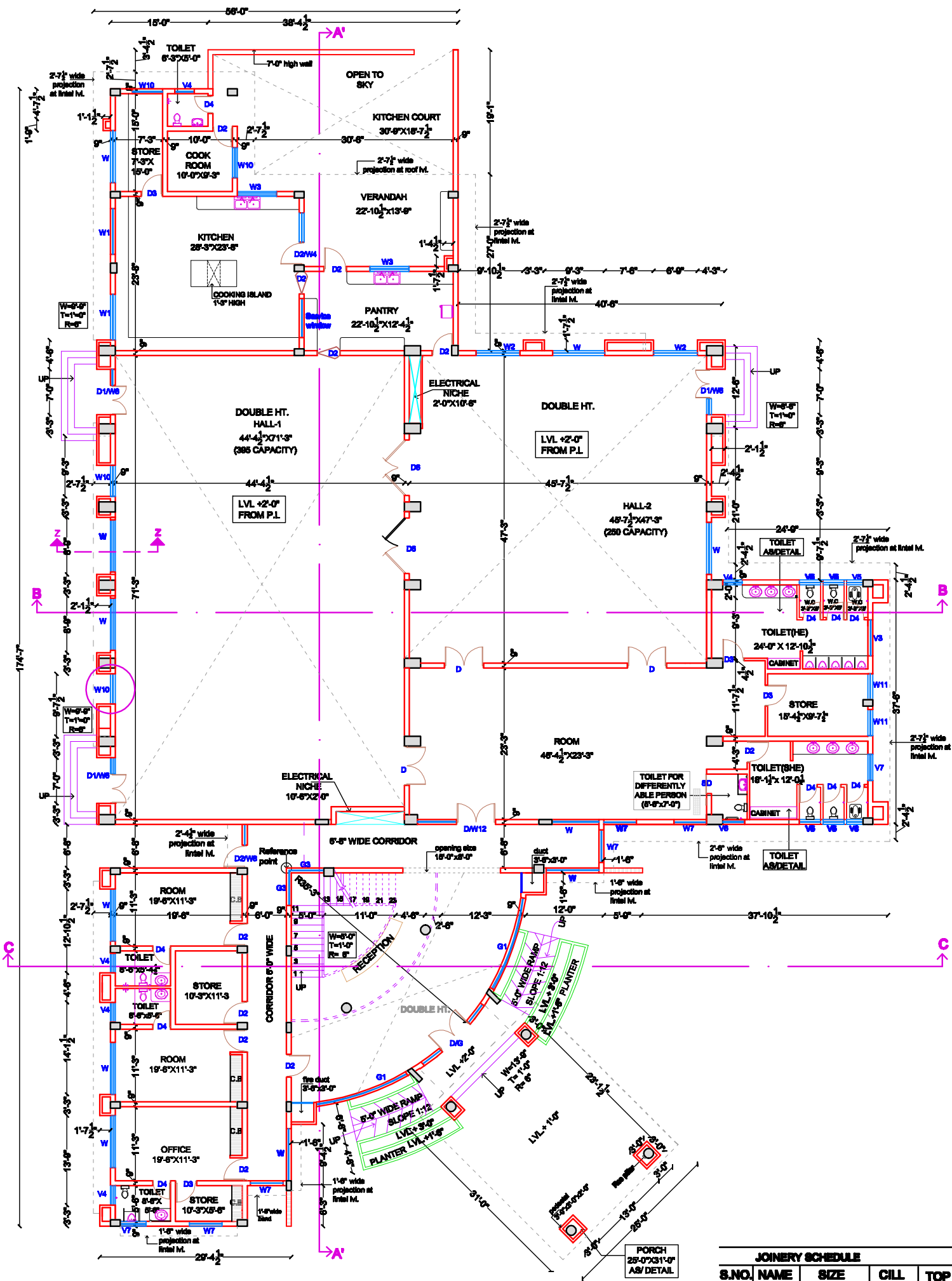
PROPOSED STD.  
COMMUNITY CENTRE  
FOR POLICE LINES

GENERAL NOTES:

1. These drawings are the property of HPHC and must not be altered copied or used in whole or in part thereof without the permission of the authority in writing.
2. Engineers must verify all dimensions before execution of work. If any doubt/discrepancy are found, the same shall be brought to the notice of Architecture wing immediately before execution of work.
3. The following approvals must be taken from the competent authority by concerned Executive Engineer before commencement of work as per office memo no: HPHC/Tech.Br./13184-209 dated: 07.06.2018.
- (a) All statutory approval must be obtained as per HBC-2017 from concerned authority falling under the jurisdiction of HSVP(HUDA),MC, forest and environmental clearance etc.
- (b) Provision of fire fighting shall be as per guidelines of HBC-2017, NBC (Fire Act) and Director of ULB. The same should be approved by concerned fire officer.
- (c) ECBC provision shall be mandatory as per government notification no-19/06/2016-5p dated 31/03/2016 or amended time to time.
4. Specifications to be followed as approved by the competent authority of HPHC.
5. Solar Photovoltaic Power Plant shall be in accordance with order no: 22/52/2005-5 power, dated: 21/03/2016.
6. Rain water harvesting as per HBC-2017.

PRODUCED BY AN AUTODESK EDUCATIONAL PRODUCT

PRODUCED BY AN AUTODESK EDUCATIONAL PRODUCT



**GROUND FLOOR PLAN**  
COVERED AREA = 12713 SQFT.  
TOTAL COVD. AREA :- 12713 + 3705.79 = 16418.79 SQFT.

JOINERY SCHEDULE				
S.NO.	NAME	SIZE	CHL	TOP
1	D	6'-0"X8'-0"	0'-0"	8'-0"
2	D1	4'-6"X8'-0"	0'-0"	8'-0"
3	D2	3'-6"X8'-0"	0'-0"	8'-0"
4	D3	3'-3"X8'-0"	0'-0"	8'-0"
5	D4	2'-9"X8'-0"	0'-0"	8'-0"
6	D5	4'-6"X8'-0"	0'-0"	8'-0"
7	D6	8'-6"X8'-0"	0'-0"	8'-0"
8	W	6'-0"X5'-3"	2'-6"	8'-0"
9	W1	7'-0"X5'-3"	2'-6"	8'-0"
10	W2	6'-9"X5'-3"	2'-6"	8'-0"
11	W3	6'-0"X4'-6"	3'-6"	8'-0"
12	D2/W4	6'-0"X4'-6"	3'-6"	8'-0"
13	D/W5	12'-0"X5'-3"	2'-6"	8'-0"
14	D1/W6	7'-0"X5'-3"	2'-6"	8'-0"
15	W7	6'-0"X5'-3"	2'-6"	8'-0"
16	D2/W8	6'-6"X5'-3"	2'-6"	8'-0"
17	D3/W9	6'-0"X5'-3"	2'-6"	8'-0"
18	W10	4'-7 1/2"X5'-3"	2'-6"	8'-0"
19	W11	4'-0"X5'-3"	2'-6"	8'-0"
20	V	5'-0"X3'-6"	4'-6"	8'-0"
21	V1	7'-0"X3'-6"	4'-6"	8'-0"
22	V2	6'-6"X3'-6"	4'-6"	8'-0"
23	V3	5'-6"X3'-6"	4'-6"	8'-0"
24	V4	3'-0"X3'-6"	4'-6"	8'-0"
25	V5	3'-3"X3'-6"	4'-6"	8'-0"
26	V6	3'-4 1/2"X3'-6"	4'-6"	8'-0"
27	V7	4'-0"X3'-6"	4'-6"	8'-0"
28	D/G	13'-0"X20'-3"	1'-6"	21'-6"
29	G1	14'-6"X20'-3"	1'-6"	21'-6"
30	G2	15'-6"X20'-3"	1'-6"	21'-6"
31	G3	5'-6"X5'-6"	1'-6" from landing M.L.	8'-0"
32	G3a	5'-6"X5'-6"	1'-6" from landing M.L.	8'-0"

**TITLE:**  
GROUND FLOOR PLAN

**CLIENT:**

**ARCHITECT:**

**SCALE:** N.T.S.      **REVISED DATE:** 03.05.13

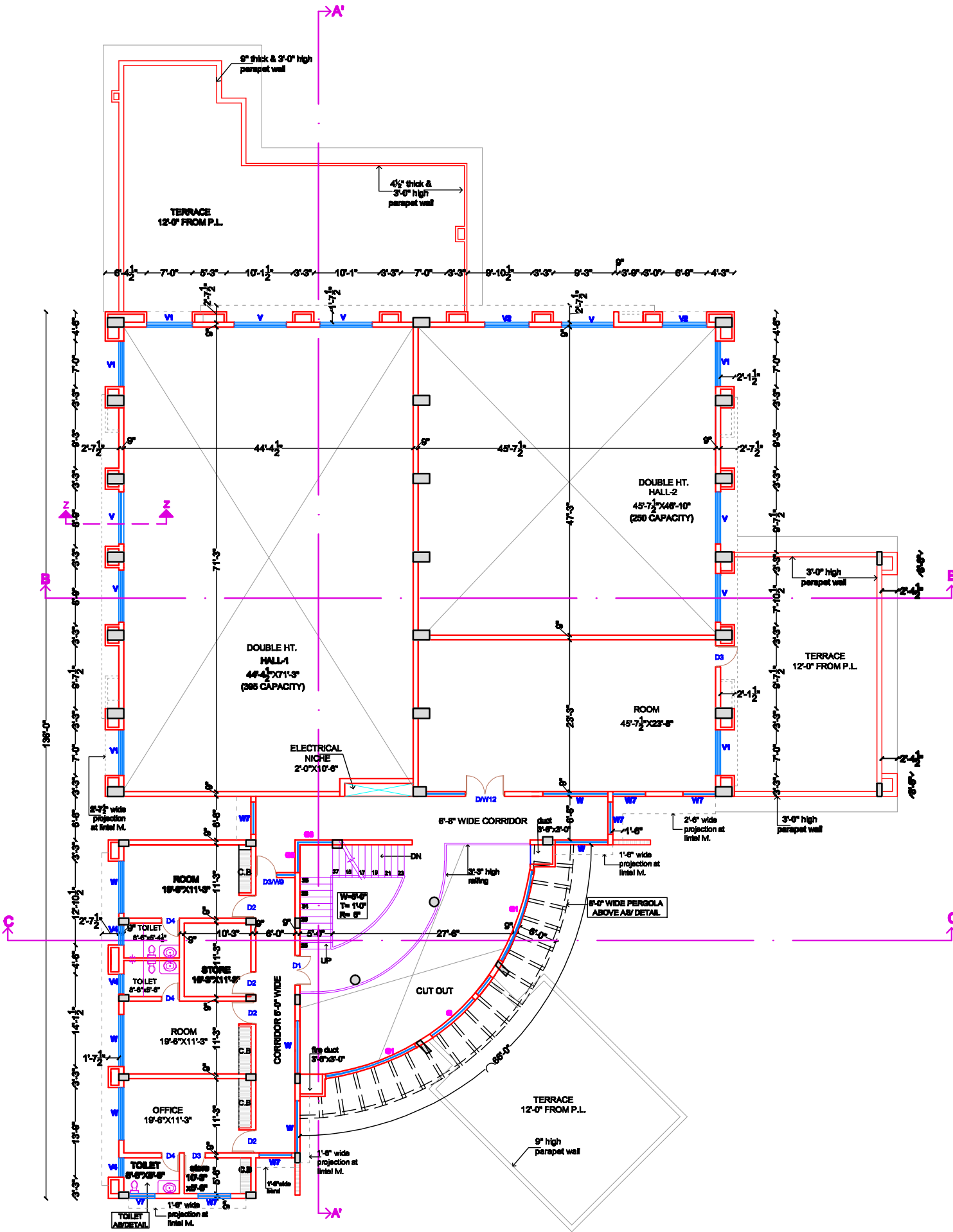
**SHEET NO:** 2-1

**CONSULTANTS:**



PRODUCED BY AN AUTODESK EDUCATIONAL PRODUCT

PRODUCED BY AN AUTODESK EDUCATIONAL PRODUCT



**FIRST FLOOR PLAN**  
COVERED AREA = 3705.79 SQFT.

**TITLE:**  
FIRST FLOOR PLAN

**CLIENT:**

**ARCHITECT:**

<b>SCALE:</b> N.T.S.	<b>REVISED DATE:</b> 03.05.13
-------------------------	----------------------------------

<b>SHEET NO:</b> 2-2	
-------------------------	--

**CONSULTANTS:**