

HARYANA POLICE HOUSING CORPORATION, PANCHKULA

PROJECT :
STANDARD DESIGN FOR CLUSTER HOUSES TYPE-III (STILT+6)

COVERED AREA :
AREA OF ONE UNIT = 778 sqft
AREA OF BALCONY = 68 sqft
AREA OF CIRCULATION = 174 sqft
TOTAL AREA = 1020 sqft

SCHEDULE OF JOINERY

S.NO	TYPE	SIZE	CILL	TOP
1.	D	3'-6"X8'-9"	----	8'-9"
2.	D1	3'-3"X8'-9"	----	8'-9"
3.	D2	3'-3"X7'-0"	----	7'-0"
4.	D3	2'-6"X7'-0"	----	7'-0"
5.	D4	2'-9"X7'-0"	----	7'-0"
6.	D5	3'-3"X8'-9"	----	8'-9"
7.	W	6'-0"X6'-3"	2'-6"	8'-9"
8.	W1	4'-3"X6'-3"	2'-6"	8'-9"
9.	W2	4'-3"X5'-3"	3'-6"	8'-9"
10.	W3	3'-0"X3'-9"	5'-0"	8'-9"
11.	W4	2'-0"X3'-9"	5'-0"	8'-9"

THIS DRAWING HAS BEEN APPROVED BY CMD HPHC ON 30.03.2017 AND AGAIN BY MD ON 18.05.2017

FIRE SAFETY MEASURE:
THE PROVISION OF PROPER FIRE SAFETY MEASURE SHOULD BE AS PER HBC 2017 AND THE SAME SHOULD BE GOT CERTIFIED BY THE COMPETENT AUTHORITY.

- GENERAL NOTES:**
- THESE DRGS. ARE THE PROPERTY OF HPHC AND MUST NOT BE ALTERED COPIED OR USED IN WHOLE OR IN PART THEREOF WITHOUT THE PERMISSION OF THE AUTHORITY IN WRITING.
 - ENGINEER AND CONTRACTOR MUST VERIFY ALL DIMENSIONS BEFORE EXECUTION OF WORK.
 - SPECIFICATIONS TO BE FOLLOWED AS APPROVED BY THE COMPETENT AUTHORITY.
 - PROVISION OF FIRE FIGHTING SHALL BE AS PER NBC AND SATISFACTION OF LOCAL FIRE AUTHORITIES.
 - SOLAR WATER HEATING SYSTEM AS PER HARYANA GOVT. NOTIFICATION.
 - RAIN WATER HARVESTING SYSTEM AS PER HARYANA GOVT. NOTIFICATION.
 - WRITTEN DIMENSIONS ARE TO BE FOLLOWED ONLY.
 - IN CASE OF ANY DOUBT PLEASE, REFER TO ARCHITECTURE BRANCH FOR CLARIFICATION.

M.D.:

CHIEF ENGINEER: CHIEF ARCHITECT:

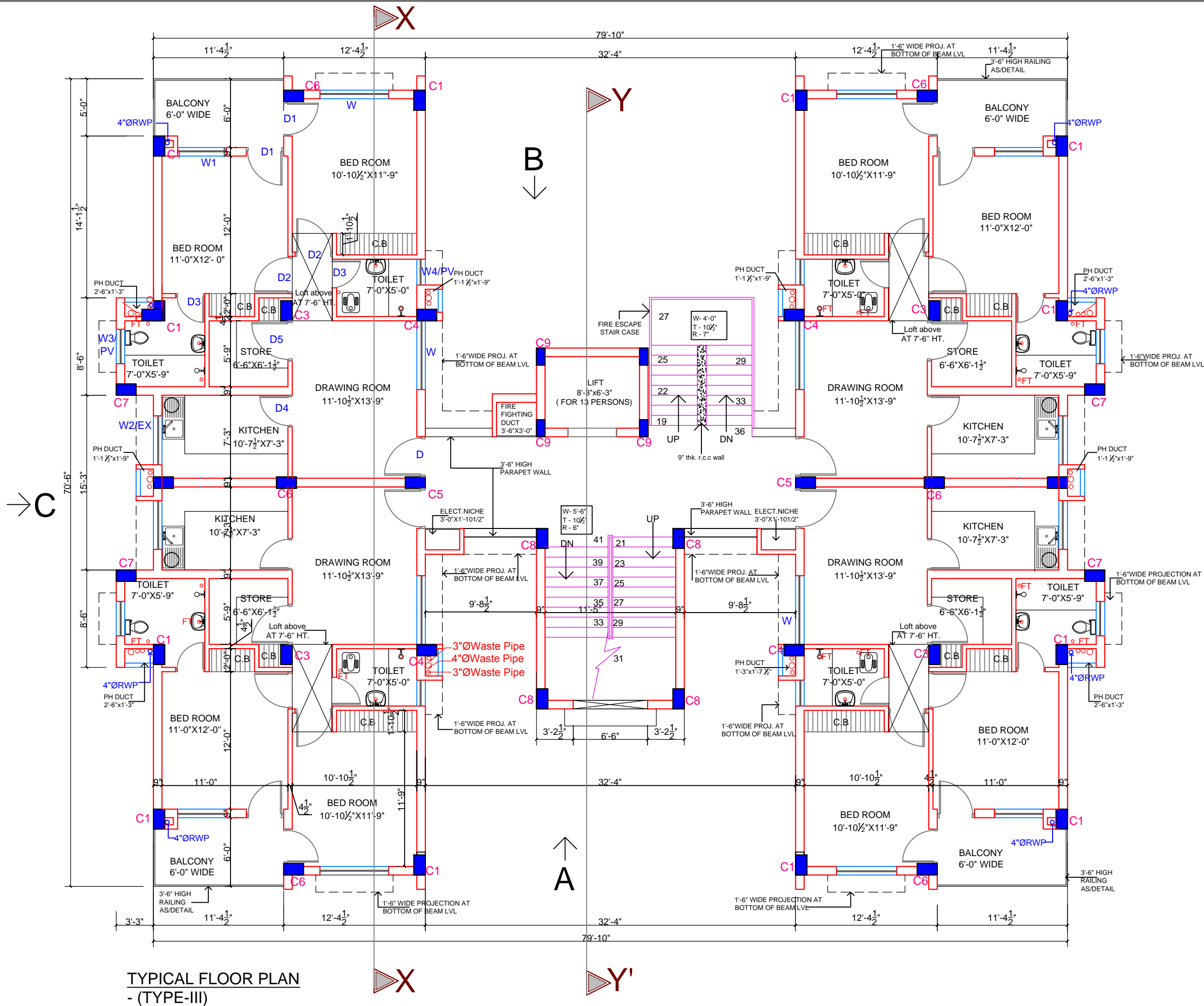
ARCHITECT: SENIOR ARCHITECT:

SCALE: N.T.S. DATE: 30.03.2017

DEALT BY: PRIYANKA CHECKED BY:

DWG NO.: 2 JOB NO.: 1126

TITLE: TYPICAL FLOOR PLAN



TYPICAL FLOOR PLAN - (TYPE-III)