

**HARYANA POLICE
HOUSING
CORPORATION,
PANCHKULA**

PROJECT :
STANDARD DESIGN FOR
3 STOREYED TYPE-II ROW
TYPE HOUSES

COVERED AREA :
AREA OF ONE UNIT = 650 sqft
AREA OF BALCONY = 90 sqft(37+53)
AREA OF STAIR CASE = 92 sqft
TOTAL AREA = **832 sqft**

SCHEDULE OF JOINERY

S.NO	TYPE	SIZE	CILL	TOP
1.	DG	7'-0"X8'-9"	----	8'-9"
2.	D	3'-6"X8'-9"	----	8'-9"
3.	D1	3'-3"X7'-0"	----	7'-0"
4.	D2	3'-0"X8'-9"	----	8'-9"
5.	D3	2'-6"X7'-0"	----	7'-0"
6.	D4	3'-6"X7'-0"	----	7'-0"
7.	W	5'-7½"X6'-3"	2'-6"	8'-9"
8.	W1	4'-7½"X5'-3"	3'-6"	8'-9"
9.	W2	2'-0"X3'-9"	5'-0"	8'-9"

THIS DRAWING HAS BEEN APPROVED BY CMD
HPHC ON 30.03.2017 AND AGAIN BY MD ON
18.05.2017

GENERAL NOTES:

1. THESE DRGS. ARE THE PROPERTY OF HPHC AND MUST NOT BE ALTERED COPIED OR USED IN WHOLE OR IN PART THEREOF WITHOUT THE PERMISSION OF THE AUTHORITY IN WRITING.
2. ENGINEER AND CONTRACTOR MUST VERIFY ALL DIMENSIONS BEFORE EXECUTION OF WORK.
3. SPECIFICATIONS TO BE FOLLOWED AS APPROVED BY THE COMPETENT AUTHORITY.
4. PROVISION OF FIRE FIGHTING SHALL BE AS PER NBC AND SATISFACTION OF LOCAL FIRE AUTHORITIES.
5. SOLAR WATER HEATING SYSTEM AS PER HARYANA GOVT. NOTIFICATION.
6. RAIN WATER HARVESTING SYSTEM AS PER HARYANA GOVT. NOTIFICATION.
7. WRITTEN DIMENSIONS ARE TO BE FOLLOWED ONLY.
8. IN CASE OF ANY DOUBT PLEASE, REFER TO ARCHITECTURE BRANCH FOR CLARIFICATION.

M.D.:

CHIEF ENGINEER: CHIEF ARCHITECT:

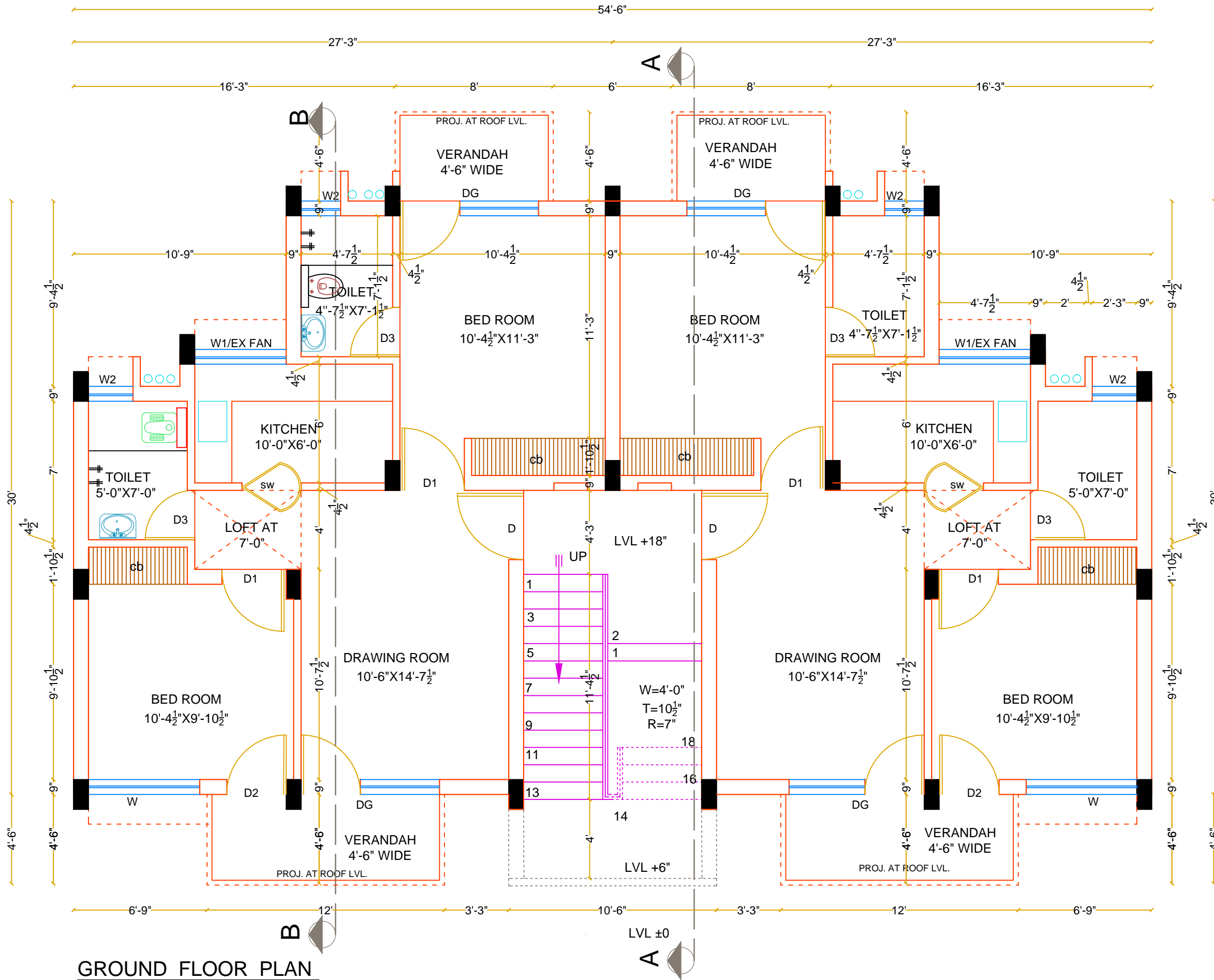
ARCHITECT: SENIOR ARCHITECT:

SCALE: N.T.S. DATE: 30.03.2017

DEALT BY: PRIYANKA CHECKED BY:

DWG NO.: 1 JOB NO.: 1058-R

TITLE:
GROUND FLOOR PLAN



GROUND FLOOR PLAN